

NORTEC

RF Products

Uni Directional Coupler

Model #: D240120000

Electrical Specifications

Frequency: 0.8-1.6 GHz

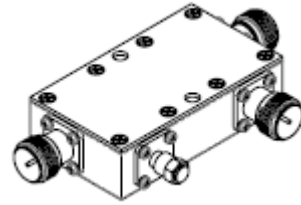
Average/Peak Power: 350 Watts /10kW (**max**)

Coupling: 40 dB +/- 1.2 dB

Insertion Loss: 0.15 dB (**max**), 0.075 dB (**typ**)

Directivity: 24 dB (**typ**)

VSWR: 1.2:1 (**max**) (Nominal 50 Ohm all ports)



N or SMA are standard connectors. You can specify the desired connectors on each port when you order.

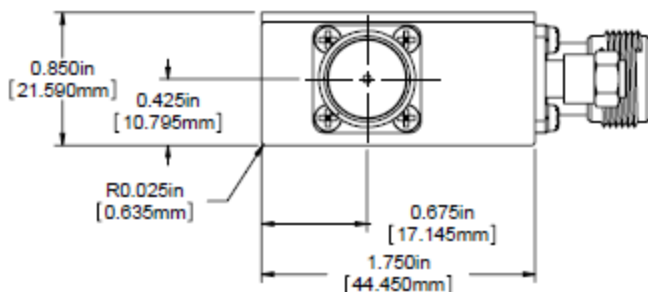
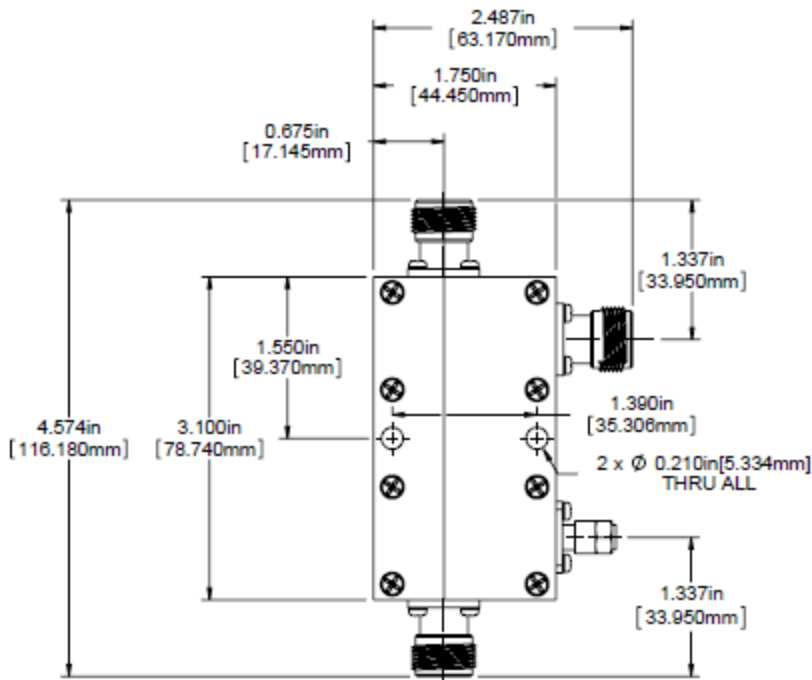
Mechanical Specifications

Connectors: N (F), Nickel plated Brass

Connector Insulator: PTFE

Connector Pin: Gold Plated Beryllium Copper

Enclosure: Aluminum – clear irridite per MIL-C-5541 class 3



Notes:

- All ports are assumed to be terminated with 50 Ohm loads for max. forward power rating.
- Max reverse power = 5 W. (with output load mismatch)
- When used at full power, heat sink mounting is required.
- Operating temperature is -35° C to 85° C